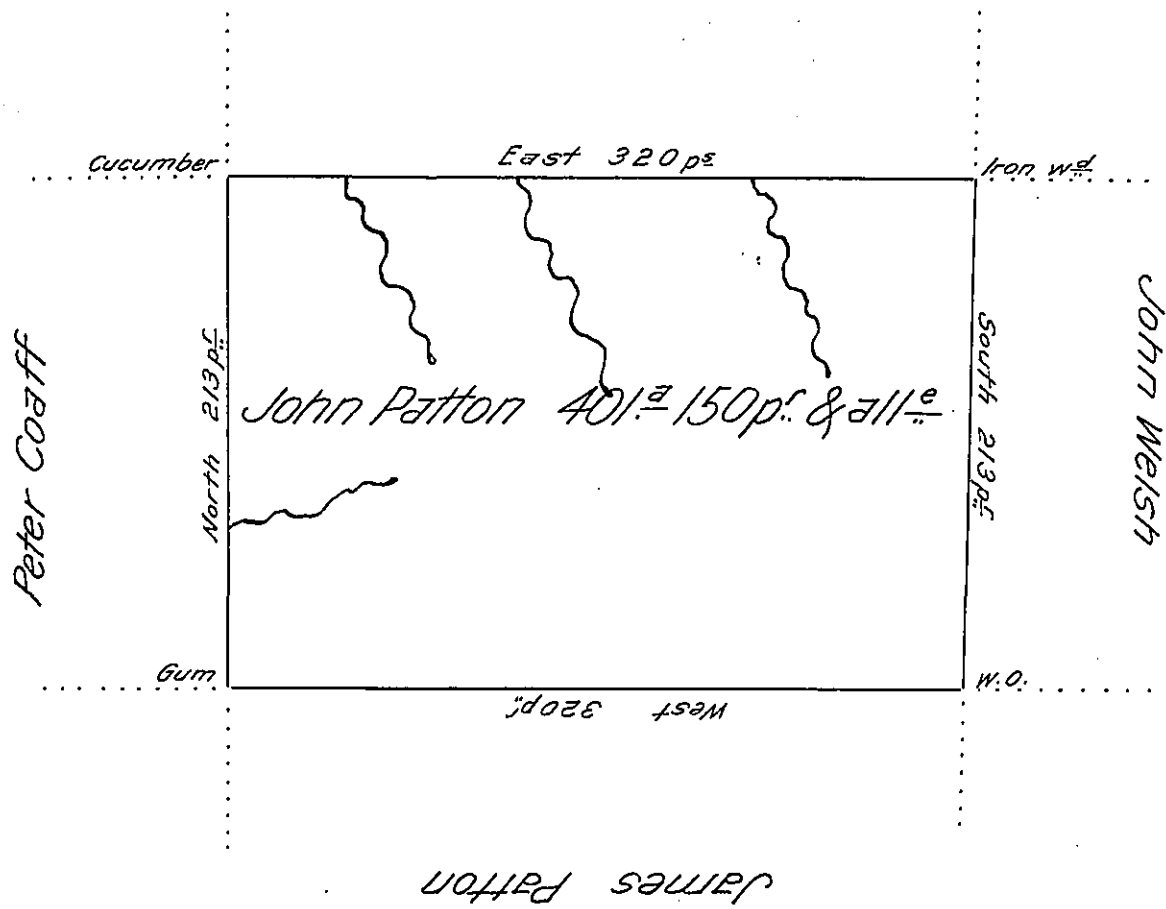


Near the Line of district No 1



Situate on the West side of French Creek in Allegheny County containing 401 Acres and 150 p.f. and allowance of Six  $\frac{1}{2}$  Cent for Roads &<sup>e</sup> Surveyed the 8<sup>th</sup> day of October 1794. In pursuance of his Improvement bearing date the 7<sup>th</sup> of October 1794.

To Daniel Brodhead Esq. }  
 Surveyor General — }

W<sup>m</sup> Power D<sup>r</sup> S<sup>r</sup>

IN TESTIMONY that the above is a copy of the original remaining on file in the Department of Internal Affairs of Pennsylvania, made conformably to an Act of Assembly approved the 16th day of February, 1833, I have hereunto set my Hand and caused the Seal of said Department to be affixed at Harrisburg, this twelfth day of June 1906.

*Lea and Brown*  
 Secretary of Internal Affairs.